

The logo is a circular emblem with a yellow and red segmented border. Inside, a dark blue banner contains the school's name in white capital letters. The background of the entire page is a light purple grid.

**SHOBNALL
PRIMARY &
NURSERY
SCHOOL**

A stylized illustration of a hand holding a yellow pencil, positioned in the upper right corner of the page.

YOUR NEW CLASS 2025-2026

**LET'S LEARN ALL ABOUT YOUR NEW CLASSROOM, TEACHER AND
CURRICULUM!**

A stylized illustration of a hand holding a yellow pencil, positioned in the upper right corner of the page.

Meet your teacher



Mrs Sadya

My name is Mrs Sadya and I will be your teacher in Year 2. I can't wait to spend the year ahead with you all.

Should you have any questions or concerns, please feel free to contact me to arrange a suitable meeting time. Email the office at: shb-office@shb.jtmat.co.uk

A bit about me!

Favourite colour: purple

Favourite animal: Rabbit

Favourite drink: Lucozade

Favourite subject: English

When I'm not at school you might find me....

I'm out and about—shopping or off on adventures with my family!

We love parks, day trips, and making happy memories together.

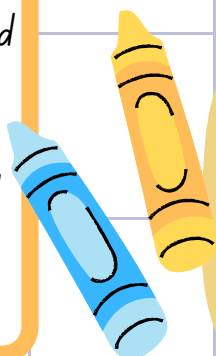


My favourite things about Year 2

Year 2 is full of fun and exciting learning! We explore new topics, get creative in art, and enjoy special days like dress-up or theme days. It's lovely to see the children grow in confidence and become more independent.

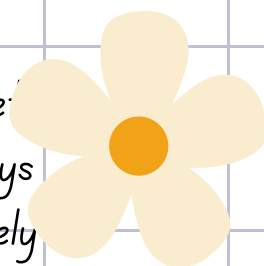
This will be my second year at Shobnall Primary and Nursery School, and I'm so excited to be continuing in Year 2! I love working with this age group and seeing how much they grow and learn throughout the year.

This year, I'm also really looking forward to leading RE across the school.



My favourite quote:

"Every child is a different kind of flower, and all together make this world a beautiful garden."



The Y2 Team



Mrs Barrow



Miss Walton



Mr Rowley



Mr Attwood



Please make sure all
uniform is clearly labelled.
with your name.

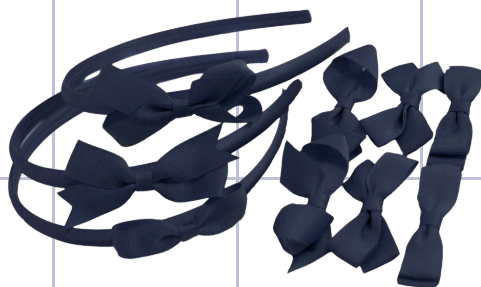
School Uniform

- In accordance with the policy and statutory guidance, the following items are acceptable for pupils in our school:

Your PE kit is the following:

- White shirt
- White polo shirt
- Plain white blouse
- Grey trousers/shorts
- Grey skirt/pinafore
- Blue and white checked dress
- Black shoes
- Royal blue/gold/red tie
- Royal blue jumper or cardigan
- Blue/Black hair bands and bows

- For health and safety, children **CANNOT WEAR EARRINGS** at any time - this includes studs.



All children must wear a school tie, unless wearing a summer dress.



Please make sure all uniform is clearly labelled with your name.

PE

- PE will be on Mondays
- Children will need to come to school in their kit

Your PE kit is the following:-

- Plain black / navy jogging bottoms
 - Plain black / navy sweatshirt / hoodie
 - Trainers
 - Plain black / navy shorts
 - Plain black / navy leggings
 - Plain white t-shirt
-
- For health and safety, children cannot wear any earrings.





Important times

8:40am - School gates open

8:45am - Classroom doors open

8:55am - School gates close and learning starts

10:30am - 10:45am - KS1 & KS2 Breaktime (snacks)

11:45am - Nursery Children - End of day

12:00pm - 1:10pm - EYFS & KS1 Lunchtime

12:15pm - 1:10pm - KS2 Lunchtime

2:15pm - 2:30pm - KS1 & KS2 Breaktime

3:20pm - Reception Children - End of day

3:30pm - KS1 & KS2 - End of day

3:45pm - School gates close

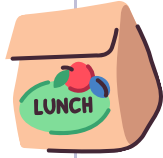


Snacks

- Snacks can be ordered by your child daily, the cost of which will be charged to your ParentPay account.
- You can send your child with a snack, but this should be healthy. Please do not send your child with the following:

- Crisps
- Chocolate
- High sugar-content foods





Lunch



- Children can either have a school dinner (2 hot options, jacket potato or a sandwich) or they can bring their own packed lunch.
- You can view the school lunchtime menu on the school website.

About Us

Key Info

Curriculum

Parents

Children

EYFS Induction 2025

Shobnall Stars

Letters to Parents

Newsletters

School Uniform

School Dinners

ParentPay

Online Safety

PFA

Diary Dates



Hot Lunch Options 12.05.25 – 16.05.25

WEEK 3	MONDAY	TUESDAY	WEDNESDAY	THURSDAY	FRIDAY
Main dish	Margherita pizza with baked potato wedges	Chicken tikka masala served with rice	Roast beef, with Yorkshire pudding, roast potatoes & gravy	Chicken & tomato pasta bake	Crispy battered fish & chunky chips
Vegetarian Main dish	Roasted vegetable pizza	Vegetable tikka masala with 50/50 rice	Quorn™ fillet with roast potatoes & gravy	Macaroni cheese	Quorn™ nuggets with chunky chips
Accompaniments	Peas & baked beans Salad bar	Sweetcorn & carrots Salad bar	Carrots & cauliflower Salad bar	Broccoli & green beans Salad bar	Peas & baked beans Salad bar
Desserts	Fruit flapjack	Marble sponge & custard	Lemon cake	Shortbread	Ice cream
Fresh fruit or yoghurt	Fresh fruit or Yoghurt	Fresh fruit or Yoghurt	Fresh fruit or Yoghurt	Fresh fruit or Yoghurt	Fresh fruit or Yoghurt
Jacket potato and sandwich selection	Jacket potato and sandwich selection	Jacket potato and sandwich selection	Jacket potato and sandwich selection	Jacket potato and sandwich selection	Jacket potato and sandwich selection

TO EAT MORE FRUIT

KEY

- 1 OF YOUR 5 A DAY
- MEAT FREE MONDAY
- CHEF'S CHOICE
- PLANT-BASED / VEGAN

A WORLD OF FUN WITH FOOD

"Allergens and cross-contamination"
All of our food is brought fresh created and prepared on the day. We have an allergen procedure in place, on plates where you enter our catering team aware of your allergen/ your child's allergies prior to using the restaurant. Our kitchens are used for multi-purpose production so we cannot guarantee the above stated are completely free from allergenic ingredients or traces of these.

The lunch menu can be found on the weekly newsletter!



Your Y2 Curriculum

Don't forget to visit your class page!

[About Us](#)

[Key Info](#)

[Curriculum](#)

[Parents](#)

[Children](#)

Anti-Bullying Ambassadors

Earth Elementals

Nursery

Reception

Year 1

Year 2

Year 3

Year 4

Year 5

Year 6

School Council

After School Clubs

Kidzone



Year 2 timetable

YEAR 2 TIMETABLE 2025 – 2026

8.45 – 9.00	9.00 – 9.30	9.30 – 10.10	10.00 – 10.30 Assembly	Morning Break 10.30 – 10.45		10.45 – 11.45	11.45 – 12.00	Lunch Break 12.00 – 1.10		Registration	1.15 – 1.30	1.30 – 2.15	Afternoon Break 2.15 – 2.30		2.30 – 3.15	Story time
Fri	Homework	Maths	10:00 – 10:30 Assembly			English	Spellings			Registration	Mastering number	Science			Topic	Story time
Thurs	Fluency	Maths	10:00 – 10:30 My Happy Mind			English	Handwriting			Registration	Mastering number	Topic			Topic	Story time
Weds	Handwriting	Maths	10:10 – 10:30 Assembly			Music/ Computing	Handwriting			Registration	Mastering number	English			Topic	Story time
Tues	Talk for Tuesday	Maths	10:10 – 10:30 Assembly			English	Handwriting			Registration	Mastering number	RE			PSHE	Story time
Mon	Handwriting	LW Reading	10:10 – 10:30 Assembly			Maths	Handwriting			Registration		PE (PPA)			PE (PPA)	Story time

Phonics

Phonics Lessons and Content:

Reception:

Autumn - Phase 2 Phonics

Spring - Phase 3 Phonics

Summer - Phase 4 Phonics

Year 1:

Autumn - Phase 3, 4 Recap & Phase 5

Spring - Phase 5

Summer - Phase 5

Year 2:

Autumn - Phase 5 Review & Bridge to Spelling

Spring: Little Wandle Spelling

Summer: Little Wandle Spelling

Scan the QR codes to access useful websites to support your learning in Phonics:

Little Wandle
Parents Page



Phonics Play



The Collins Hub
- EBooks



We're teaching every
child to read with
Little Wandle Letters
and Sounds Revised

A complete SSP validated by
the Department for Education



English

SPAG

- Finger spaces
- Capital letters and a full stop
- Explanation marks
- Question marks
- Joining clauses using and
- Capital letters for names of people, places, days of the week and 'I'

Scan the QR codes to access useful websites to support your learning in English:

School Website
- English Page



Text types:

- Explanations
- Letters
- Narratives
- Persuasive
- Poetry
- Recount
- Reports

Spelling Shed



The Collins Hub
- EBooks



Whole Class Guided Reading Texts:

- Spring Term: The Owl Who Was Afraid Of the Dark
- Summer Term: The Worst Witch



Spelling Shed



Collins
BIG CAT

Maths

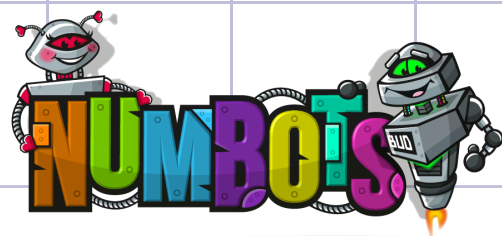
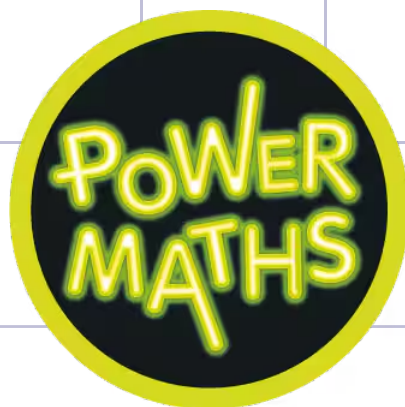
- Numbers to 100
- Addition and Subtraction 1
- Addition and Subtraction 2
- Properties of Shape
- Money
- Multiplication and Division 1
- Multiplication and Division 2
- Length and Height
- Mass Capacity and Temperature
- Fractions
- Time
- Problem solving and efficient methods
- Position and Direction
- Statistics

Scan the QR codes to access useful websites to support your learning in Maths:

School
Website -
Maths Page



TTRockstars

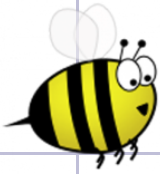


Homework

Weekly children will receive:



- Either a piece of maths or English homework on Fridays.



Spelling Shed

- Reading – children are required to read at least three times a week and bring their reading diary to school every day to be signed.



- Spellings – 10 words a week that are tested on a Friday. These should be practised on Spelling Shed every evening for at least 10 minutes.



- Times Table Rockstars should also be used daily to help your children maintain their times table knowledge for at least 10 minutes.

- Homework should be returned by Wednesday





Outdoor Play and Learning

What is OPAL (Outdoor Play and Learning)?

- OPAL is a program that helps schools improve lunchtimes by making outdoor spaces more fun, creative, and inclusive.
- It encourages children to play in their own way, using their imagination and making their own choices.
- The focus is on unstructured, outdoor play using natural and open-ended materials like sticks, sand, tires, and water.

Benefits of OPAL for children:

- Boosts creativity – children invent their own games and ideas.
- Builds confidence and independence – they make choices and take manageable risks.
- Encourages teamwork and problem-solving – playing together helps develop social skills.
- Improves physical health – children are more active and spend more time outdoors.
- Supports emotional wellbeing – play helps reduce stress and builds resilience.

Children will need to bring a pair of wellies into school, so that they can access OPAL, no matter the weather!



DONATIONS NEEDED!

Guttering and buckets for water play

- Beach spades
- Cuddly toys
- Costumes
- Hard construction hats
- Plastic trucks
- Small sinks and bathtubs

We are also looking for parents who could support in building areas of play for our children – this includes:

- Dens
- Mud kitchen
- Shelters Etc.

Assessments

Throughout your child's time at primary school, the Department for Education (DfE) has several key assessments to check their progress. These checkpoints help teachers understand how your child is doing and where they may need more support.

Autumn term

Reception - Baseline Assessment

SUMMER TERM

Reception - Early Years Foundation Stage Profile

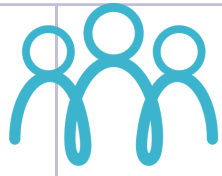
Year 1 - Phonics Screening Check

Year 2 - JTMAAT SATs

Year 4 - Multiplication Tables Check

Year 6 - DfE SATs





STAFFORDSHIRE
CONNECTS

SEND

At Shobnall Primary & Nursery School, we believe that all children have an equal right to a full and rounded education which will enable them to achieve their full potential. We use our best endeavours to secure special educational provision for pupils for whom this is required, that is 'additional to and different from' that provided within the differentiated curriculum to better respond to the four areas of need identified in the Code of Practice (September 2014).

SCAN ME




SEMH

SCAN ME



We firmly believe that Shobnall Primary & Nursery School develops, nurtures and supports its pupils, making them fully prepared for life in the 21st century.

This page and the accompanying booklet below will provide you with very useful information about what we do to support the mental health and wellbeing of all within our community, inclusive of pupils, staff and parents and the service we are able to offer.



Dates for your diary

Tuesday 11th September - Photo Day

Spring Term (September) - Year 2 Forest School

Monday 20th and Wednesday 22nd October - Parents'
Evening

Thursday 11th December - Year 2/Year 3 Nativity

Tuesday 9th December - Pantomime

Monday 9th and Wednesday 11th February - Parents'
Evening

Wednesday 25th March - Year 2 Mothers' Day Lunch

Monday 15th June - Sports Day

Wednesday 17th June - Year 2 Fathers' Day Lunch

