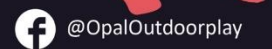




Supporting school improvement through play

www.outdoorplayandlearning.org.uk



What is OPAL?

What is OPAL?

OPAL stands for Outdoor Play and Learning. It is a programme designed to improve the quality of play for every child in school.

Why OPAL Matters

Play is one of the most important ways children learn about the world around them.

Through play, children develop:

- Communication skills
- Teamwork
- Resilience
- Problem-solving abilities
- Physical and mental wellbeing by encouraging active lifestyles, social interaction and joyful experiences throughout the school day.



Play

What Kind of Play Do We Want to See?

We want to see children engaged in creative, imaginative and active play where they can explore their own ideas and interests. We encourage teamwork, cooperation, problem-solving and healthy risk-taking within a safe environment. Most importantly, we want all children to feel included, confident and happy while developing important life skills through play.

Positive Impact on Behaviour and Safety

Since introducing OPAL, we have seen a positive impact across the school. Children are more engaged in meaningful play opportunities, which has helped to reduce behaviour incidents during playtimes. We have also seen a decrease in injury incidents as children learn to manage risk, cooperate with others and play more responsibly. OPAL has created a calmer, happier and more positive play environment for everyone.



Our OPAL journey




Supporting school improvement through play

www.outdoorplayandlearning.org.uk



 @OPAL_CIC

 @OpalOutdoorplay

Our OPAL journey




Supporting school improvement through play

www.outdoorplayandlearning.org.uk



 @OPAL_CIC

 @OpalOutdoorplay

Our OPAL journey




Supporting school improvement through play

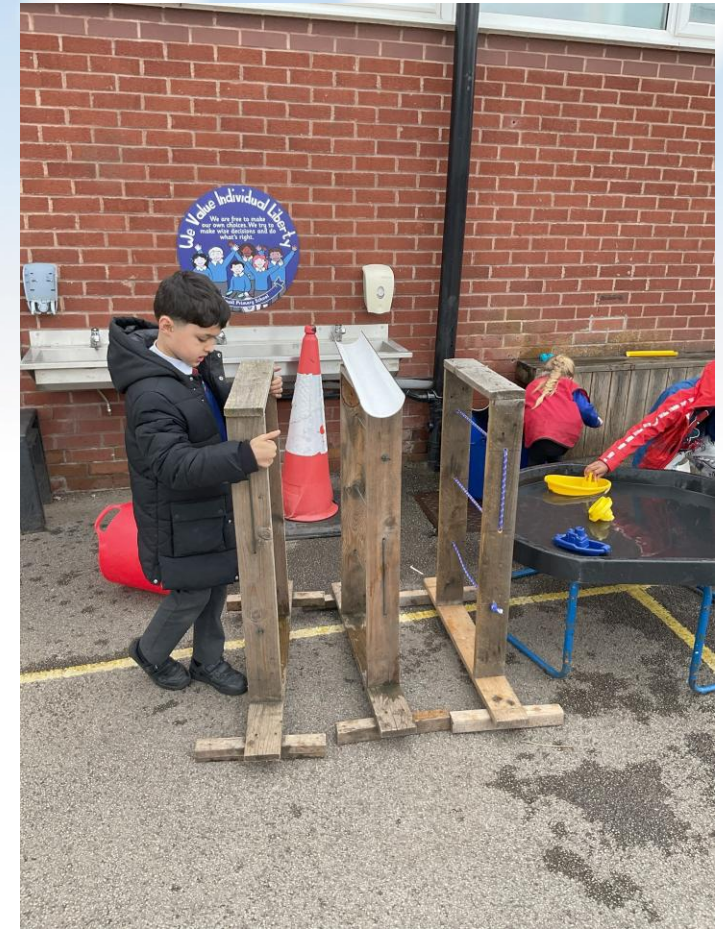
www.outdoorplayandlearning.org.uk



 @OPAL_CIC

 @OpalOutdoorplay

Our OPAL journey



Supporting school improvement through play

www.outdoorplayandlearning.org.uk



 @OPAL_CIC

 @OpalOutdoorplay

Our OPAL journey




Supporting school improvement through play

www.outdoorplayandlearning.org.uk



 @OPAL_CIC

 @OpalOutdoorplay

Our OPAL journey




Supporting school improvement through play

www.outdoorplayandlearning.org.uk



 @OPAL_CIC

 @OpalOutdoorplay

Our OPAL journey




Supporting school improvement through play

www.outdoorplayandlearning.org.uk



 @OPAL_CIC

 @OpalOutdoorplay

Our OPAL journey



Supporting school improvement through play

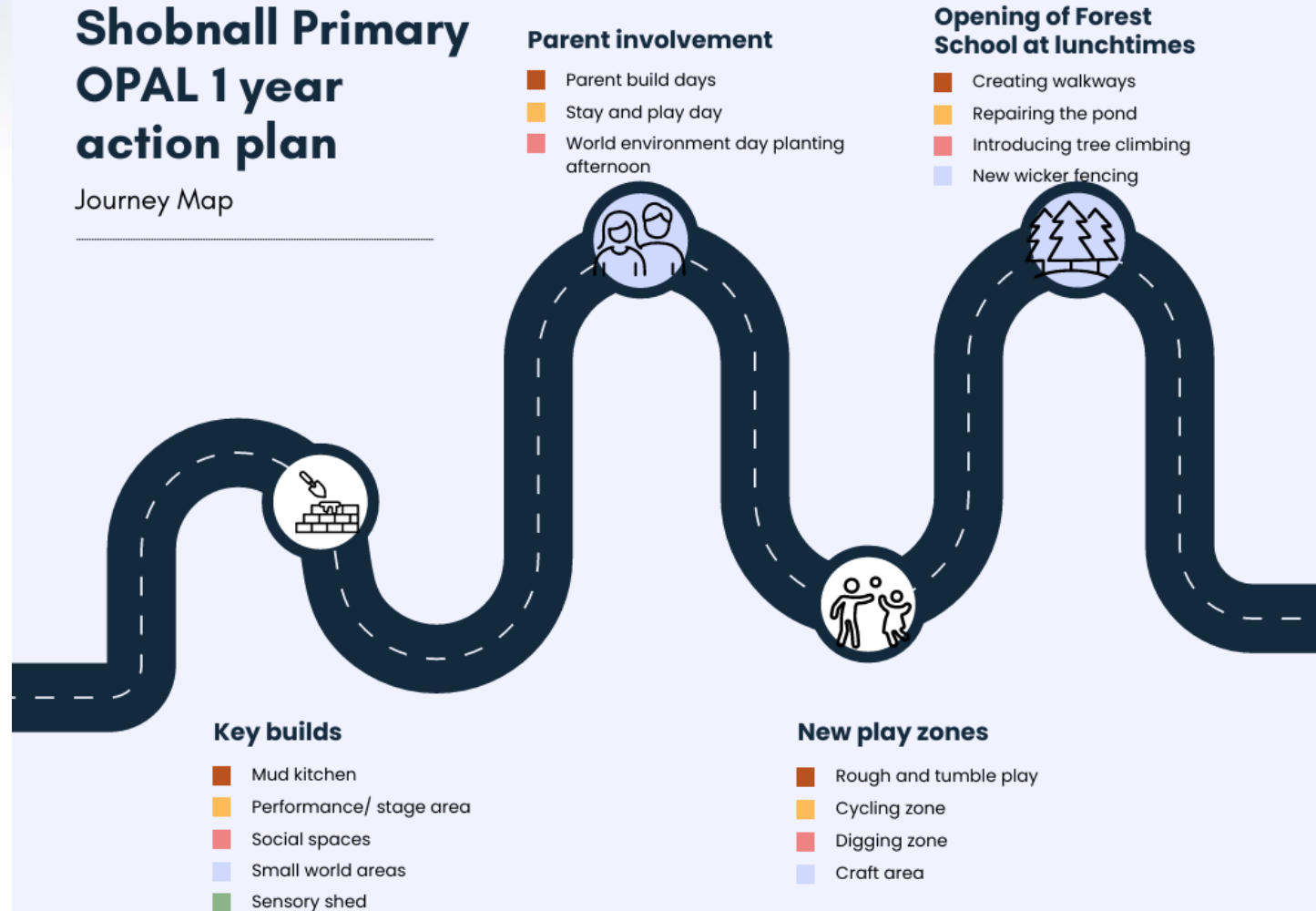
www.outdoorplayandlearning.org.uk



Our OPAL journey

Shobnall Primary OPAL 1 year action plan

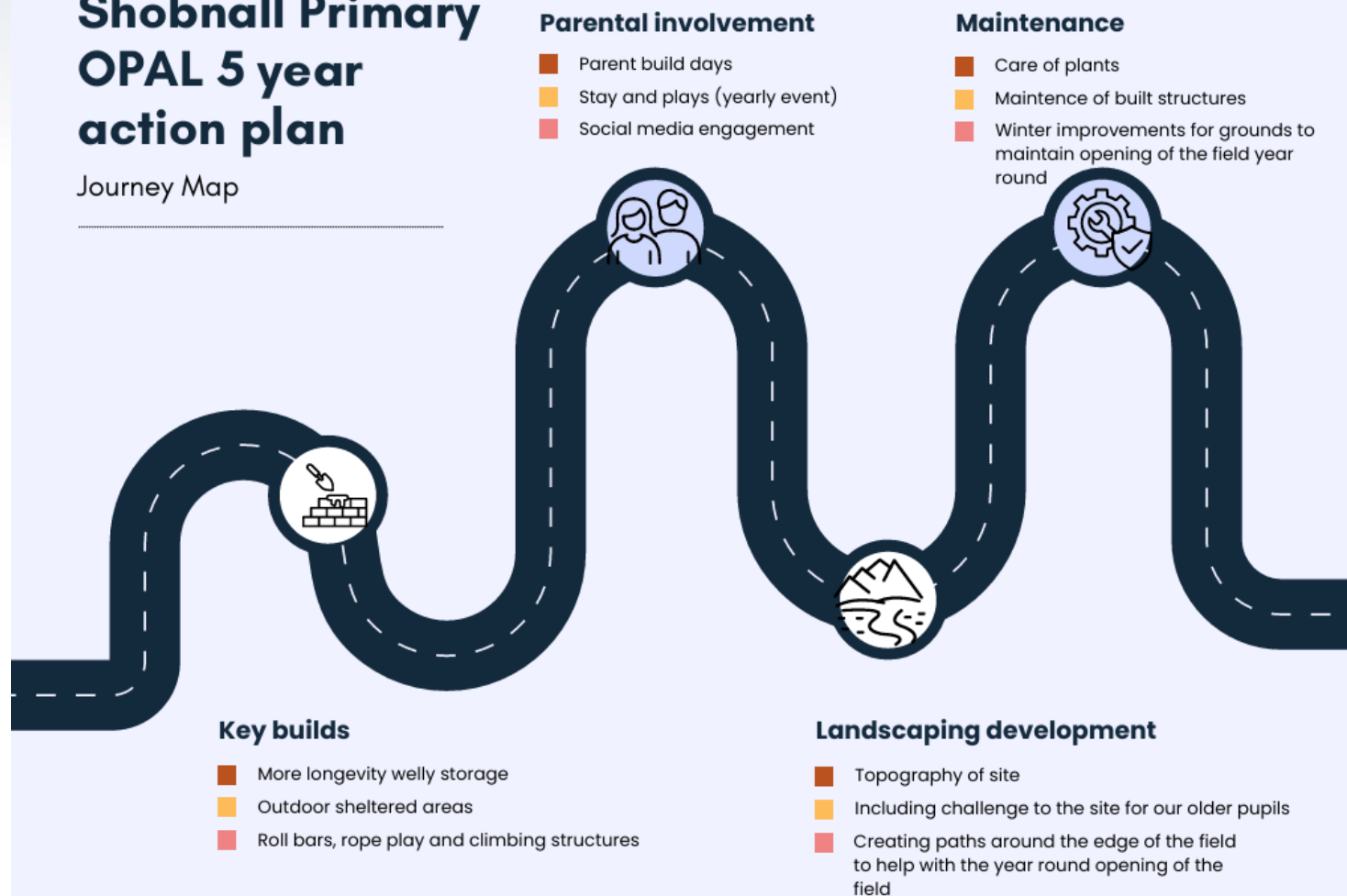
Journey Map



Our OPAL journey

Shobnall Primary OPAL 5 year action plan

Journey Map



OPAL Audit

Our OPAL Audit – July

In July, our school will take part in an OPAL audit to assess the progress we have made on our journey. The audit will look at:

- Quality and variety of our play opportunities
- Inclusion for all children, safety and supervision
- How engaged and happy children are during playtimes

We are incredibly proud of the progress made so far and are working hard towards achieving a strong OPAL grading.



How can you help?

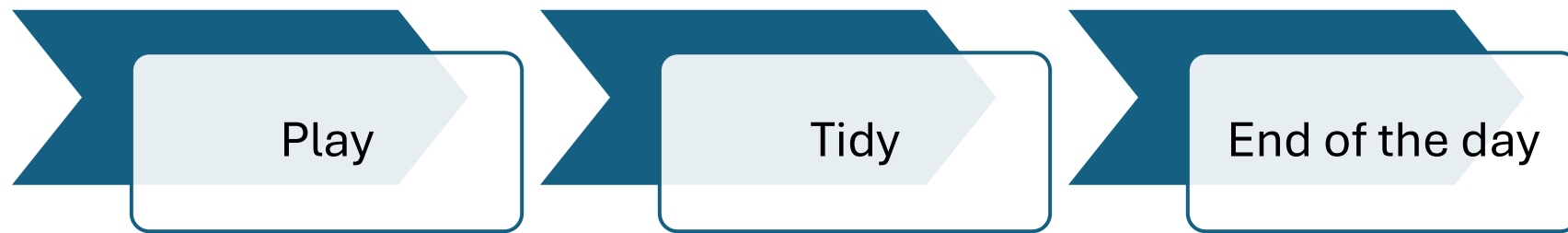
- Donate loose parts and play resources
- Support outdoor play at home
- Encourage independence and creativity
- Volunteer or support future OPAL events
- Share ideas and feedback with school

Is there anybody that can support building a stage?



Thank you

Thank you for supporting our OPAL journey and taking the time to join us today. We hope you enjoy experiencing OPAL play with the children and seeing the positive impact it has across our school community.



Head outside to play and explore with your child. The PTFA have put on some drinks and snacks to help raise some money for OPAL.

The tidy up rhumba song will play, and this will initiate tidy up time.

Classical music will then play to signal your child to return to class.

Your child's teacher will then get them ready for home, and they will dismiss from the usual places.

